



solidian

build solid.



solidian SPACERS & TIES

GET CONNECTED WITH THE RIGHT DISTANCE



solidian

📍 Sigmaringer Straße 150
72458 Albstadt
Deutschland - EU
☎ +49 74 3110 3135
✉ info@solidian.com

📍 Dr. Slavka Rozgaja 3
47000 Karlovac
Croatia - EU
☎ +385 47 693 300
✉ sales@solidian.com



A close-up photograph of two white plastic solidian SPACERS against a dark background. One spacer is shown from the side, highlighting its T-shaped profile and a central vertical post. The other is shown from a top-down perspective, revealing its cross-shaped base and four angled legs. The text "solidian SPACERS" is overlaid in white and orange.

solidian SPACERS

solidian SPACERS, the special and patented spacers for our close-meshed mat reinforcements such as the **solidian GRID** simplify the application for the architecturally high-quality design of surfaces made of exposed concrete. A minimal footprint of the spacers ensures that there are no imprints on the exposed concrete side of curtain walls, for example.

solidian SPACERS

- for mesh sizes 21 mm and 38 mm
- for exposed concrete surfaces
- for concrete covers up to 25 mm



In order to keep the numerous possibilities open for you to plan spacers and supports exactly according to your situation, we recommend the product portfolio of NEVOGA GmbH. Structural tests have demonstrated that our **solidian** reinforcement products in combination with NEVOGA spacers allow the installation of the reinforcement just as easily as you are already used to with conventional reinforcement. But: our advantage is the low reinforcement weight, which makes e.g. the installation on a formwork table a child's play.

Visit www.nevoga.com for more information



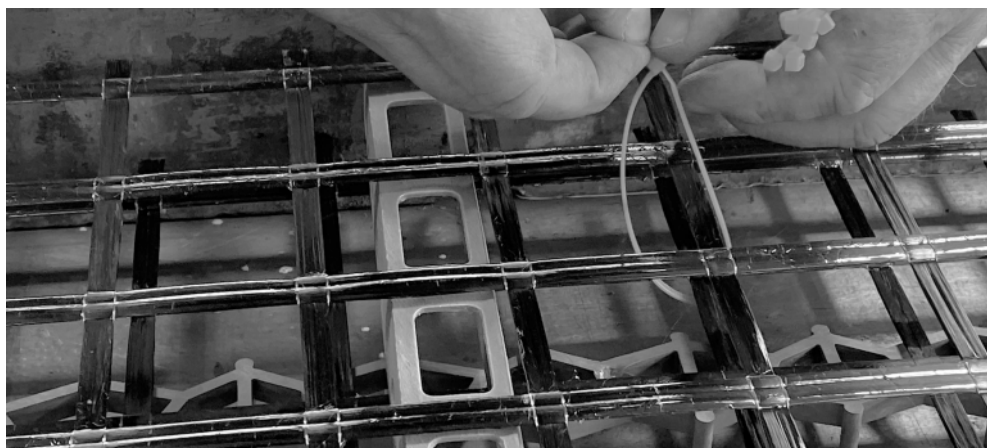


solidian TIES are our plastic-based binders that ensure that no rust plumes are created on the concrete surface due to the use of binding wires.

By using conventional binder wire, you run the risk of promoting near-surface rust stains. In addition, we do not recommend the use of metallic binders in combination with carbon fiber reinforced plastics, as contact corrosion may occur in the bond.

solidian TIES

- Cable ties in 3 lengths of plastic



For the quick connection of reinforcement mats such as the **solidian GRID** or **solidian ANTICRACK**, we also recommend the NEVOGA spring ball clip (here in the version without cast concrete).

The mats are held together at the overlaps simply by putting on the spring ball clip and are sufficiently secured against shifting.



Alkali-resistant



Easy handling



Quick installation

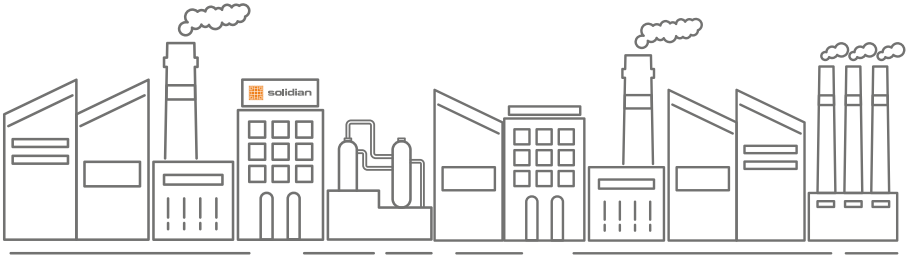


Ready for fair-faced concrete



About **solidian**

Always one step ahead: with innovative products
we can offer you perfect solutions for your needs



solidian has made a name for itself as a leading company that provides a wide range of solutions to improve construction structure.

We made a commitment to clients to provide them with customer service, technical support and being the leader in providing global innovative fiber material solutions.

We use advanced technologies to produce special solutions according to your needs. Our functional grids are used to optimize product and processing properties in a wide variety of applications – including concretes, UHPC, cement-based mortars, adhesives, and dry-mix compounds.

discover our
industry-leading
reinforcements & systems

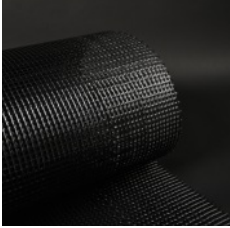
build solid.

Other Products



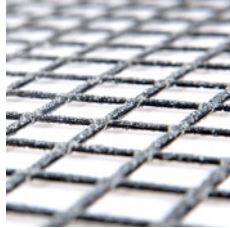
check out our NEW website
for more products and
innovative solutions

solidian.com/products



solidian eGRID

Specially developed flexible grids in combination with electro conductive coatings provide high tensile strength and outstanding electro conductive properties. **solidian eGRID** is now also available with different conductive surface treatments for special applications in which electrical conductivity is important.



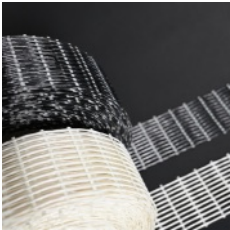
solidian ANTICRACK

is a further development of our reinforcement **solidian GRID**, which functions specifically as crack eliminating reinforcement. The carbon reinforcement can be laid close to the surface and thus have a particularly positive influence on crack formation in concrete components.



solidian OPEN END

Non-corrosive Carbon, Basalt, or AR-Glass connector with Single or Double Open End suitable for construction reinforcement in masonry, arches and vaults. Perfect for reinforcement of buildings in earthquake-affected areas.



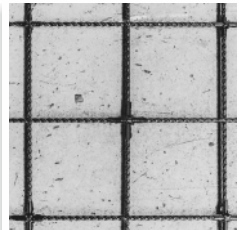
solidian BRIKSY

High-tech, non-Corrosive, AR glass or Carbon fiber reinforcement brick mesh on a roll for efficient crack control specially designed for any wall width.



solidian REBAR

The rod-shaped reinforcement **solidian REBAR** are combining high-strength fibers with extreme resistant resins. **solidian REBAR** are the right choice where ever high loads occur and components are permanently exposed to aggressive environmental influences.



solidian REMAT

The **solidian REMAT** transfer all the outstanding properties of our bar-shaped reinforcements, the **solidian REBAR**, to the mesh format. The result is robust and walkable mats for more efficient handling on the construction site.

build solid.

